



THE
KIMBERLEY
REGIONAL GROUP

KIMBERLEY Annual Report 2023-24



Acknowledgments

Kimberley Regional Group members would like to acknowledge the Traditional Custodians of the land on which they work and live, and recognise their continuing connection to land, water and community. They pay respect to Elders past, present and emerging.

Kimberley Regional Group members would like to acknowledge and extend their gratitude to the Premier of Western Australia, Ministers, Directors General, State, Federal and Local Government Departmental Officers, Industry Body members, and private sector representatives who have attended Kimberley Regional Group meetings in the 2023-2024 year or who have assisted with, or provided a forum for challenges and opportunities facing the Alliance to be addressed.

CONTENTS

THE KIMBERLEY REGIONAL GROUP 4

FOREWORD - DAVID MENZEL | KRG CHAIR..... 7

OVERVIEW - PAUL ROSAIR | KRG EXECUTIVE OFFICER..... 9

OUR VISION 11

BUSINESS PLAN OBJECTIVES 13

KEY PRIORITIES 2023-24..... 14

TOPICS AND ACTIONS 14

HOUSING 15

PROSPEROUS DIVERSE ECONOMY 15

PROVISION OF GOVERNMENT SERVICES 16

COMMUNITY SAFETY AND CRIME PREVENTION 17

EMERGENCY MANAGEMENT 17

MANAGEMENT OF ALCOHOL AND OTHER DRUGS..... 19

JUVENILE JUSTICE 19

GOVERNMENT FORUMS..... 20

STAKEHOLDERS..... 25

KIMBERLEY REGIONAL GROUP REPRESENTATIVES..... 26

ECONOMIC OUTLOOK - PAUL ROSAIR | KRG EXECUTIVE OFFICER 27



THE KIMBERLEY REGIONAL GROUP

The Kimberley Regional Group (KRG) of local governments is an alliance of the four Shires of the Kimberley in northern Western Australia, being the Shire of Broome, the Shire of Derby West Kimberley, the Shire of Halls Creek and the Shire of Wyndham East Kimberley.

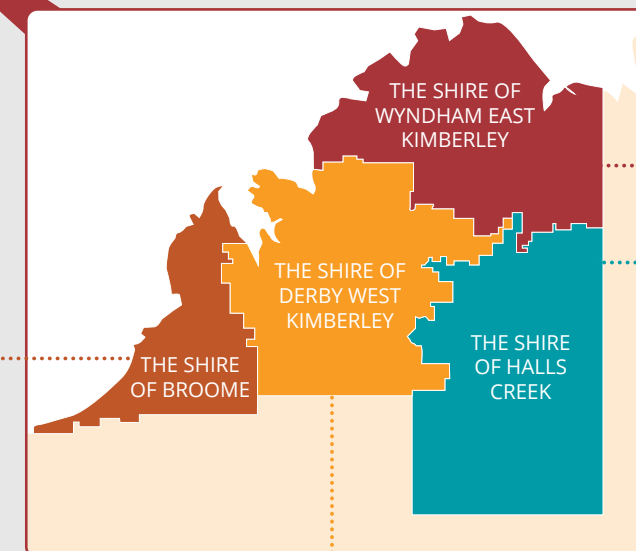


The Shire of Wyndham East Kimberley

The Shire of Wyndham East Kimberley covers some 112,066km² and includes Wyndham Port, the town of Kununurra and the Ord River Scheme. The region is home to 7.5k people. It is renowned for its unspoilt natural beauty and attractions including the eastern end of the Gibb River Road, El Questro Wilderness Park, Lake Argyle, as well as conservation and marine parks.

The Shire of Halls Creek

The Shire of Halls Creek has significant resource sector opportunities including, gold, copper and dysprosium. With a population of around 3.6k people, with 74 percent identifying as Aboriginal, the Shire covers an area of 133,046km² including large Aboriginal communities, the World Heritage listed Purnululu National Park, Wolfe Creek Meteorite National Park (Kandimalal) and Lake Gregory (Paruku) along with notable pastoral interests.



The Shire of Derby West Kimberley

The Shire of Derby West Kimberley has a population of around 7.1k people and covers approximately 119,731km². Spanning from Derby on the coast to Fitzroy Crossing and beyond, the Shire includes much of the Fitzroy River (Martuwarra) catchment along with popular tourist attractions such as the western end of the Gibb River Road, Tunnel Creek, Windjana Gorge and the Horizontal Falls.

The Shire of Broome

The Shire of Broome covers approximately 56,000km² and has a coastline of 900km stretching across much of the Dampier Peninsula and including the world-famous Walmanyjun Cable Beach. Home to 17k residents, the Shire also caters for an impressive 205k visitors each year.

FOREWORD

DAVID MENZEL KRG CHAIR

It is both an honour and a privilege to present the Kimberley Regional Group's Annual Report for 2023/24. This has been undeniably a successful year for the group. As Chair of this dynamic alliance of Local Governments representing the Kimberley Region, I am very proud of the work we continue to do to advocate for the growth and prosperity of our communities.



As outlined in this report, our region spans an immense landmass, home to a small yet vibrant population of 40,000 people. Notably, 42% of our population identify as First Nations peoples. Our north-facing coastline brings us into proximity with Southeast Asia, positioning the Kimberley as an important gateway for regional trade and cultural exchange. However, our connectivity challenges, with only a single sealed road and one gravel road linking us to the broader world, often create hurdles that can seem insurmountable.

The Kimberley Regional Group (KRG) plays a pivotal role in advocating for the policies and investments that our partners have identified as essential to unlocking our region's potential. We are committed to providing decision-makers with informed advice that will foster positive outcomes in alignment with government policy.

Where necessary, we also aim to guide policy changes that will bring even greater benefits to our communities.

I firmly believe that much of our work has broader relevance to other remote and regional areas across Australia. The future prosperity of our nation is intrinsically linked to the success of its remote and regional communities, and the Kimberley stands as a model for this potential.

I would like to express my heartfelt gratitude to my fellow Local Government Councillors, the CEOs, their dedicated staff, and the KRG Executive for their unwavering commitment to this alliance. Special thanks also to NAJA Business Consulting Services for your ongoing support, which has been instrumental in making the KRG the successful force it is today.



OVERVIEW

PAUL ROSAIR KRG EXECUTIVE OFFICER

In 2023-2024, the Kimberley Regional Group (KRG) WA continued to drive collaboration across the Kimberley, advocating for its four Local Governments, their constituents, and surrounding communities.



As a key Local Government body, the KRG remains a recognised voice for Kimberley communities, achieving significant outcomes through strategic partnerships and influencing government policy across a broad range of infrastructure and services.

A major focus this year was the region's housing crisis. The KRG took a leadership role by convening the Kimberley Housing Forum, bringing together key stakeholders from regional, state, and national governments, as well as industry and non-profit sectors. This forum led to critical policy recommendations and the development of a housing project pipeline that the KRG continues to champion.

The KRG also partnered with RCAWA to deliver two successful whole-of-government forums. These events enabled the sector to engage at the highest levels of government—an essential initiative as the state and federal election year approached. Staying ahead of policy developments remains a priority for the KRG and its members.

Community safety and crime reduction are also central priorities, directly impacting business investment and tourism. The KRG has played an active role in shaping the State's banned drinkers register and liquor licensing legislation, advocating for a balanced approach that supports both regulation and economic growth.

Strengthening community resilience following the Fitzroy Floods has been another key focus. The KRG has worked to enhance transport logistics and social infrastructure, securing increased state and federal investment in disaster resilience and infrastructure.

I extend my appreciation to Chair David Menzel, Secretary Vernon Lawrence, and our dedicated group members. A special thank you to our great Executive team—Michelle Mackenzie, Jane Lewis, and Bec Billing—for their significant contributions to the success of the KRG.





OUR VISION

Our Vision is to maintain and enhance the rich diversity and liveability of the Kimberley for its people and the world, focusing on the key pillars of Place, People, Prosperity and Performance. We advocate for the policy settings and seek sustained and increased investment into the entire region in order that it may deliver growth and prosperity

PLACE

- » NORTHERN WESTERN AUSTRALIA
- » LAND AREA 425K KMS²
- » GATEWAY TO ASIA: 12KMS OF COASTLINE FACING ASIA
- » 6 TOWNS AND 150+ ABORIGINAL COMMUNITIES

PEOPLE

- » RESIDENTIAL POPULATION: 39,000
- » 40% ABORIGINAL AND TORRES STRAIT ISLANDERS
- » OVER 425,000 TOURISTS P.A.

PERFORMANCE

- » \$7.66B ANNUAL ECONOMIC OUTPUT
- » \$4.432B GROSS REGIONAL OUTPUT
- » 3000 BUSINESSES
- » 26,869 PEOPLE IN THE LABOUR FORCE

PROSPERITY

- » INTERNATIONAL AND REGIONAL AIRPORTS
- » THREE PORTS
- » GROWING RESOURCES SECTOR - CRITICAL METALS, OIL AND GAS, GREEN TECHNOLOGIES
- » VIBRANT AGRICULTURE, PASTORAL AND AQUACULTURE INDUSTRIES
- » UNIVERSITIES AND RESEARCH INSTITUTIONS
- » MAJOR TOURISM DESTINATION
- » BURGEONING ABORIGINAL CULTURAL ENTERPRISES



BUSINESS PLAN OBJECTIVES

	OUR PILLARS	
	OUR PEOPLE	OUR PLACE
OUR GOAL	<ul style="list-style-type: none"> A vibrant community based on equity, inclusion and opportunity for all. 	<ul style="list-style-type: none"> Our region will become a leader in creating a sense of place and liveability whilst preserving history, culture and our unique environment.
OUR OUTCOMES	<ul style="list-style-type: none"> Substance abuse and associated harm is reduced. Kimberley regional health outcomes improve Crime is reduced both across the region and by location Towns are vibrant and inclusive with strong participation and volunteering culture School attendance improves with a higher number of students graduating year 12 Fit for purpose housing is available to meet individual and community needs. 	<ul style="list-style-type: none"> Our towns provide a variety of public spaces that welcome local residents and visitors with shaded spaces and safe access. Our streets are safe day and night and leverage smart technology We have liveability attractors including sufficient and fit for purpose recreation areas, aquatic facilities, libraries, sporting facilities and a variety of leisure experiences. Our regional character endures across generations with culture and a sense of place preserved in our architecture and locations. A reduced ecological footprint for the region.

BUSINESS PLAN OBJECTIVES

	OUR PILLARS	
	OUR PERFORMANCE	OUR PROSPERITY
OUR GOAL	<ul style="list-style-type: none"> As a collective, we will support the delivery of excellence in governance and service delivery that is relevant and of value. 	<ul style="list-style-type: none"> The potential of the Kimberley as a strong and diversified economy is realised with benefits retained in the region and the opportunity to participate available to all.
OUR OUTCOMES	<ul style="list-style-type: none"> Shire resources are maximised. Shire processes are streamlined and efficient. The region is well placed to be responsive and adapt to change.  	<ul style="list-style-type: none"> The Kimberley region is prosperous with a diversified and sustainable economy. Local businesses and jobs are enhanced through opportunity created through private and government investment. Unemployment is reduced with less people dependent of welfare. Infrastructure is fit for purpose and mitigates the isolation of the region for Australian markets whilst maximising proximity to Asian and international markets. Our infrastructure is protected from known and potential threats.

KEY PRIORITIES 2023-24

TOPICS AND ACTIONS

- WALGA Governance Review
- Commonwealth Disaster Funding Review
- Banned Drinkers Register and Legislation
- Aboriginal Heritage Act
- WA Development Index
- Tanami Road Activation Plan
- Emergency Services and Emergency Management
- Natural Disaster Recovery Funding Arrangements Review
- Kimberley Crime Statistics
- Community Safety and Crime Preventions
- Benchmarking
- Aviation Green Paper
- Kimberley Housing Round Table
- Local Government Sustainability
- Co-operative Research Centre Northern Australia
- Regional Road Group Projects Funding
- Kimberley Development Commission Funding Proposal
- RAI Summit Canberra Trip
- State and Federal Budget 24/25 Overview Kimberley Perspective
- First Port of Entry Status Broome and Wyndham
- Administrative: Strategic Planning, Governance Review, SLA Assessment

KEY PRIORITIES 2023-24

HOUSING

The KRG worked throughout the year on an advocacy plan which included a position paper, meetings with Ministers and Departmental executives, organisation of a Kimberley Housing Round Table and development of a housing pipeline for advocacy purposes.

In order to address Kimberley housing pressures, the KRG's policy priorities are:

- Access to contemporary data to inform investment and maintain affordability through project pipelines to meet current and projected need.
- Ensure land availability
- Increased investment in social housing by leveraging assets and partnerships with government to unlock investment and create local jobs.
- Better targeted Government Regional Officers Housing (GROH) policy to attract and retain a government and non-government community sector workforce.
- Targeted regional incentives to increase affordable housing supply, stimulate investor activity to increase the supply of rental homes for key workers, local businesses, and the non-government sector.

PROSPEROUS DIVERSE ECONOMY

Much of the Kimberley's economic and social infrastructure is not fit for purpose leading to increased costs of production, supply chain disruptions, lack of access to global markets, and reduced value adding opportunities. The KRG developed an Investment Prospectus which included many projects to address infrastructure shortfalls; such as the Tanami Road Activation, Fitzroy Crossing Airport and Access Road, East Kimberley Regional Airport upgrades, Broome and Wyndham Boating Facilities and the Derby Wharf Masterplan. The KRG also made a submission for the Aviation Green Paper.

Our position policy includes the following priorities:

- Fit for purpose social and economic infrastructure and services that supports local jobs, and economic growth and diversification.
- Economic
- Social
- Access to markets
- Better land use
- Planning and regulation
- Investment in workforce

KEY PRIORITIES 2023-24

PROVISION OF GOVERNMENT SERVICES

The KRG have focused their attention on Local Government Sustainability, looking specifically at benchmarking, the transfer/increase of service provision and costs and inequitable Financial Assistance Grants, with advocacy objectives including:

- That the general standard of government services and access to those services in the region is at least comparable to that which applies in the metropolitan area.
- Better access to services to support and improve the liveability and social and economic outcomes of towns and remote communities.
- Improved regional planning and coordination of government services.
- Sustainable funding of local government and non-government community services.

As outlined in our position paper, our policy priorities across the areas of housing, emergency management, health, education and training and justice and public safety are:

- Access to good-quality services that are flexible and responsive to local needs and focus on delivering positive outcomes
- Improved service planning and co-ordination of government services
- Sustainable funding of community services
- Local government sustainability

KEY PRIORITIES 2023-24

COMMUNITY SAFETY AND CRIME PREVENTION

The KRG recognises the importance of increasing community safety across the Kimberley region. It wrote several submissions and letters concerning the Banned Drinkers Register, which has now resulted in improved legislation.

A Community Safety and Crime Prevention project was also commissioned which, when complete, will be used for advocacy of increased government investment in community safety initiatives such as improved street lighting, graffiti management, installation and maintenance of CCTV cameras, rangers working in partnership with police and community services.

The KRG policy priorities are:

- Whole of government and community response
- A focus on crime prevention
- Increased investment in Kimberley services and facilities

EMERGENCY MANAGEMENT

With ex-tropical cyclone Ellie causing major flooding affecting the Kimberley region, the KRG had increased contact with Ministers and Departmental executives over the response and recovery period. This engagement included advocacy for improvements in the Disaster Recovery Funding Arrangements and alternative logistics infrastructure and policy including the Tanami Road, First Point of Entry status for Kimberley ports, sustainable warehousing, waste strategy, telecommunications, flood warning systems, evacuation facilities. We also made written submissions regarding inquiries into the State Emergency Services.

The KRG policy priorities are:

- Timely Access to Disaster Relief Funding Arrangements
- Funding for betterment in Disaster Relief Funding Arrangements WA (DRFWA)
- New and increased investment into building community disaster resilience
- A new funding pool to support Aboriginal communities to build disaster resilience
- Investment to support local business build resilience and recover from natural disaster events

KEY PRIORITIES 2023-24

MANAGEMENT OF ALCOHOL AND OTHER DRUGS

Local governments must balance the part that alcohol plays in Australian society with the risks to health, safety, and wellbeing its misuse can pose for the community. The KRG wrote several submissions and a joint advocacy letter with the Australian Hotels Association regarding the amendments to the Liquor Control Act 1988 (Section 64) Restrictions

The KRG policy priorities are:

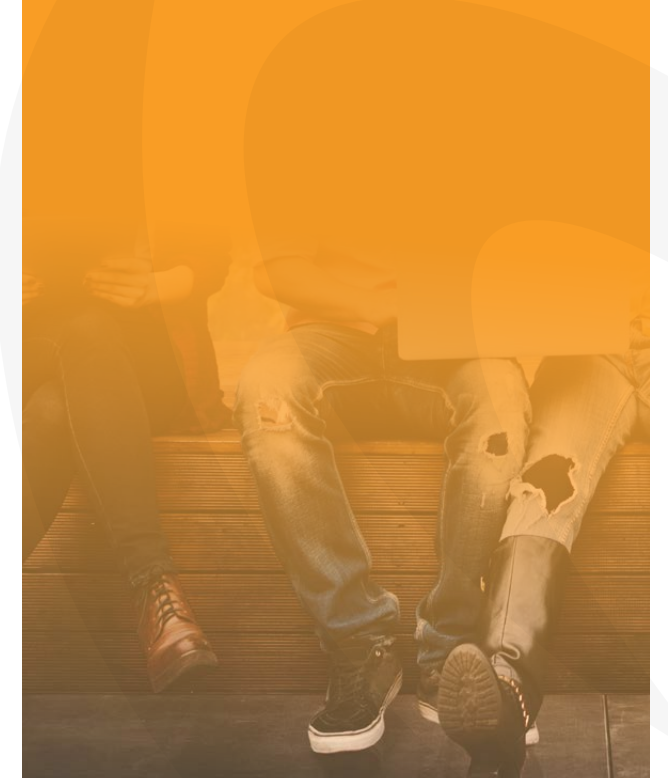
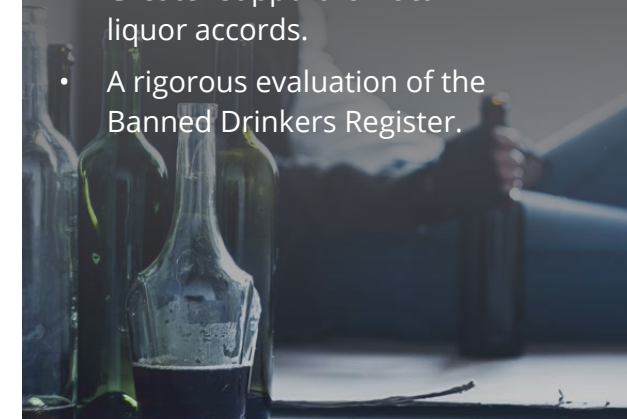
- A consistent approach to alcohol restrictions between regional towns.
- Development of a Kimberley Alcohol and Other Drug Prevention Strategy.
- Development of a Kimberley Regional Alcohol Action Plan.
- Improved localised preventative, rehabilitation and wellness services and infrastructure.
- Greater deterrents and resourcing to address the issue of illegal supply of alcohol and other drugs.
- Adequate police resources to enforce the law.
- Greater support for local liquor accords.
- A rigorous evaluation of the Banned Drinkers Register.

JUVENILE JUSTICE

Youth offending is often underscored by complex social, cultural, historical, and political factors, in conjunction with individual experience and personal circumstances. The KRG's work in this area has been focused on the prospectus which includes diversionary infrastructure, the BDR submissions, and the commissioning of a Community Safety and Crime Prevention project.

The KRG policy priorities are:

- Whole of government and community response
- Legislative Reform of Section 29 of the Criminal Code WA
- A focus on early intervention and prevention
- Increased investment in Kimberley services and facilities



GOVERNMENT FORUMS

In August 2023 and June 2024, the Kimberley Regional Group combined forces with the Regional Capitals Alliance WA. Kindly hosted by the City of Vincent, these events allowed delegates from federal, state and local governments a chance to engage over lunch, after which the formal sessions were held.

In 2023, Hon. Patrick Gorman MP addressed the delegates regarding the federal government's current population decentralisation policy, funding opportunities with the Growing Regions and Housing Australia Future funds, the NDIS and aged care reforms, impacts on local government on achieving the net zero by 2050 target, and Closing the Gap initiatives.

We then heard from Jennifer Whyte, Director Greater WA, NIAA who discussed opportunities for local governments in partnership with local communities.

Our state government panel consisted of:

Leon McIvor, Deputy Director General, Housing and Assets, Department of Communities; Caroline Spencer, Auditor General; Erin Gauntlett, Deputy Director General DLGSC; Dean Mudford, Chief Executive DevelopmentWA and Anthony Kannis, Director General, DPLH who all spoke to key concerns of the RCWA members.

This panel session was followed by an informative local government session where we heard from Nic Sloan, CEO WALGA about local government sustainability in the face of cost shifting and increased roles and responsibilities; and Candy Choo, CEO LGPRO regarding attraction and retention of staff into regional local government roles.

In 2024, the forum was bigger and better: with a State and Federal election on the horizon, and the chance to reflect on achievements and policies going forward, we were honoured to have attendance by:

Hon. Patrick Gorman MP Assistant Minister to the Prime Minister, Assistant Minister for the Public Service and representing Hon. Catherine King MP. (<https://ministers.pmc.gov.au/gorman/2024/regional-capitals-alliance-wa-government-forum-and-networking-lunch-perth>)

Hon. Minister Simone McGurk, Minister for Training and Workforce Development, Water and Industrial Relations.

Ms Divina D'Anna Parliamentary Secretary to the Deputy Premier; Treasurer; Minister for Transport; Tourism and representing Hon. Jackie Jarvis, Minister for Agriculture and Food.

Our state government panel consisted of:

Mike Rowe - Director General, Department of Communities; Anthony Kannis - Director General Department of Planning Land and Heritage; Stuart Smith - Director General Department of Biodiversity, Conservation and Attractions, Paul Isaachsen - Deputy Director General Department Primary Industries and Regional Development; Andrew Chaplyn - Deputy Director General Department of Energy, Mines, Industry Regulation and Safety

This was followed by a presentation by Karen Chappel - President WALGA;

Nic Sloan - CEO WALGA, an address by Candy Choo, CEO LGPRO and a very passionate ask of government from Louise Giolitto, CEO WACOSS

KRG would like to acknowledge and thank everyone for their involvement and attendance.



STAKEHOLDERS

A total of 6 KRG meetings were held over the 2023-2024 financial year. Although preferable, meeting in person on every occasion is difficult due to tight schedules of delegates and the travel distances – so a balance of in-person and virtual meetings is required.

KRG would like to thank the Town of Victoria Park and the City of Vincent for hosting the in-person meetings.

The meetings were well attended by KRG members, observers and visiting speakers including:

Members (as at June 2024):

- Cr David Menzel (Chair), President, Shire of Wyndham East Kimberley
- Cr Peter McCumstie, President, Shire of Derby West Kimberley
- Cr Malcolm Edwards, President, Shire of Halls Creek
- Cr Chris Mitchell, President, Shire of Broome

Observers:

- Cr Desiree Male, as President and Deputy President Shire of Broome
- Sam Mastrolembro, CEO, Shire of Broome
- Jeremy Hall, Acting CEO Shire of Broome
- James Watt, Director Corporate Services Shire of Broome
- Cr Geoff Haerewa, as President and Deputy President, Shire of Derby West Kimberley
- Cr Kerrissa O'Meara Shire of Derby West Kimberley
- Cr Brett Angwin, Shire of Derby West Kimberley
- Amanda Dexter, CEO Shire of Derby West Kimberley

- Cr Trish McKay, Deputy Shire President Shire of Halls Creek
- Susan Leonard, CEO Shire of Halls Creek
- Phillip Cassell, CEO Shire of Halls Creek
- Musa Mono, Acting CEO Shire of Halls Creek
- Cr Tony Chaffer, Deputy Shire President Shire of Wyndham East Kimberley
- Vernon Lawrence, CEO Shire of Wyndham East Kimberley
- Nick Kearns, Director of Planning/Community Shire of Wyndham East Kimberley

Visiting Speakers

- Hon. Louise Kingston, Member for the South West Region, Shadow Minister for Regional Cities, Climate Action, Tourism
- Dr Allan Dale, Chief Scientist CRCNA and Professor of Tropical Regional Development, The Cairns Institute and James Cook University
- Grant Robinson, Assistant Auditor General
- Mala Hajiali, CEO West Kimberley Futures Empowered Communities
- Christy Hawker, CEO Binarri-binyja Yarrwo Aboriginal Corporation
- Richard Aspinall, Regional Manager National Indigenous Australians Agency
- Boyd Brown, Regional General Manager WA Telstra Retail & Regional
- Jennifer Thomas, Regional Development and Engagement Manager NBN
- Nathan Dal Bon, Housing Australia
- Ellie Hampton, Housing Australia
- Pav Sivanewaran, Housing Australia
- Robert Taylor, CEO WAITOC WA Indigenous Tourism Operators
- Shane Ivers, CEO Shire of Irwin



STAKEHOLDERS

In addition to attendances at KRG meetings, the following Government and industry representatives had engagements with KRG representatives and Executive Officer regarding their portfolios and alignment with the KRG agendas.

- Hon. David Michael MLA, Minister for Ports; Local Government; Road Safety; Minister Assisting the Minister for Transport
- Hon. Don Punch MLA, Minister for Regional Development; Disability Services; Fisheries; and Seniors and Ageing.
- Hon. Jacki Jarvis MLC, Minister for Agriculture and Food; Forestry; Small Business
- Hon John Carey BA MLA Minister for Planning; Lands; Housing; Homelessness
- Hon. Patrick Gorman MP, Assistant Minister to the Prime Minister, Assistant Minister for the Public Service, Assistant Minister to the Attorney General
- Hon. Louise Kingston, Shadow Minister for Climate Action, Regional Cities, Tourism
- Senator Anthony Chisholm, Assistant Minister for Education, Assistant Minister for Regional Development, Deputy Manager of Government Business in the Senate
- Office of the Premier
- Office of the Minister for Local Government and Youth
- Office of the Minister for Police Corrective Services; Racing and Gaming; Defence Industry; Veterans Issues
- Office of the Minister for Regional Development
- Office of the Minister for Emergency Services
- Paul Zinkel, Committee Secretary. Standing Committee on Regional Development, Infrastructure and Transport Joint Standing Committee on Aboriginal and Torres Strait Islander Affairs, Department of the House of Representatives
- Anthony Kannis, Director General, Department of Planning, Lands and Heritage
- Amy Noon, Ethan Redshaw, Leah Horton - Department of Local Government, Sport and Cultural Industries
- Belinda Jeffery, Department of Infrastructure, Transport, Regional Development, Communications and the Arts
- Sybille Rodgers, Strategy Officer Department of Local Government, Sport and Cultural Industries
- Allan Dale, Co-operative Research Centre Northern Australia (CRCNA) Chief Scientist
- Boyd Brown, Regional General Manager WA Telstra Retail & Regional
- Chuck Berger, Kimberley Development Commission
- David MacLennan, CEO, City of Vincent
- Dean Haynes - Assistant Director – Engagement, Office of Northern Australia Partnerships and Projects Division
- Ian Duncan, WALGA
- Janine Hatch, Director, RDA Kimberley
- Liz Ritchie, CEO, Regional Australia Institute
- Local Government Focus Group: Deloitte
- Luke Bosher, Head of Program, Strategy, Impact Housing Australia
- Matt Reimer, DFES
- Michael Andrew, Membership & Licensing Manager, Australian Hotels Association
- Michele Pucci, Director People and Place, KDC
- Mike Rowe, Director General Department of Communities
- Paula O'Leary, Shelter WA
- Paul Ferrante, Manager Regional North, DevelopmentWA
- Richard Aspinall, Regional Manager National Indigenous Australians Agency
- Sarah Crawford, WA News
- Tim Fraser, Executive Director Local Government, DLGSC



KIMBERLEY REGIONAL GROUP REPRESENTATIVES



ECONOMIC OUTLOOK PAUL ROSAIR KRG EXECUTIVE OFFICER

The economic outlook for the Kimberley region and Western Australia (WA) in 2024-25 reflects both challenges and opportunities. While WA's economy remains one of the strongest in the nation, global economic uncertainties, rising interest rates, and inflationary pressures continue to shape regional growth prospects.

Kimberley-Specific Economic Outlook

The Kimberley region faces unique economic pressures, including high unemployment, a critical housing shortage, and labour constraints exacerbated by remote workforce challenges. Rising construction costs and supply chain disruptions further hinder housing development, despite government commitments to regional infrastructure.

Western Australia's Economic Landscape

WA's economy is expected to experience moderate growth in 2024-25, supported by strong mining exports, infrastructure investment, and population growth. However, the broader economic environment remains mixed. Interest rates, which increased from 0.1% in 2021 to around 4% in 2023, were forecasted to peak at 6-7% in mid-2024. This dampened household spending and business investment, particularly in discretionary sectors.

WA's housing market remains relatively resilient despite national corrections, with property prices stabilising due to continued demand and government-led infrastructure projects. Labour shortages, particularly in construction, healthcare, and skilled trades, remain a persistent challenge, impacting productivity and wage growth. Inflation, which peaked at 7% in 2023, is expected to ease to 3-4% in 2024-25 but will continue to affect household budgets.

Tourism, a key economic driver, is expected to experience modest growth, though higher travel costs and economic uncertainty may impact visitor numbers. Retail and hospitality, which contribute approximately 25% of regional employment, may see slowed growth due to reduced consumer spending. However, ongoing investments in transport, utilities, and disaster resilience—particularly following the Fitzroy Floods—are expected to stimulate economic activity.

The Kimberley Regional Group (KRG) continues to advocate for strategic investment in housing, workforce development, and economic diversification to ensure long-term regional resilience and prosperity.

Overall, WA and the Kimberley are poised for moderate economic growth in 2024-25, driven by targeted investments, policy initiatives, and regional collaboration.



KIMBERLEY Annual Report 2023–24

For further information:

Shire of Halls Creek: ceo@hcshire.wa.gov.au

Shire of Derby West Kimberley: ceo@sdwk.wa.gov.au

Shire of Broome: sam.mastroleambo@broome.wa.gov.au

Shire of Wyndham East Kimberley: vernon.lawrence@swek.wa.gov.au

www.kimberleyrg.com.au